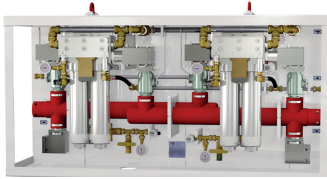


FILTRATION SOLUTIONS

Filter Systems for Mining



Filter units



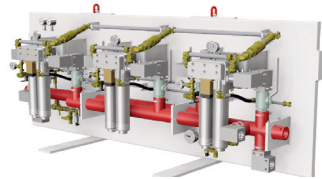
ID - 3226

Filter station with cartridge filters

Max. operating pressure 350 bar
 Max. flow 1600 lpm
 Input / Output DN50SS Steck-O
 Backflush outlet DN19 Steck-O
 Material stainless steel

Typical application High pressure filtration

Filter units



ID - 3232

Filter station with cartridge filter

Max. operating pressure 350 bar
 Max. flow 2400 lpm
 Input / Output DN50SS Steck-O
 Material stainless steel

Typical application High pressure filtration

Filter units



ID - 10380

Single filter station with cartridge filter

Max. operating pressure 350 bar
 Max. flow 800 lpm
 Input / Output DN50SS Steck-O
 Material stainless steel

Typical application High pressure filtration

Backflush filter



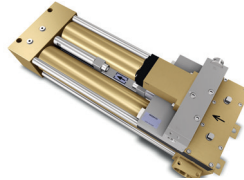
ID - 1229

Double filter - backflushable

Filter rating from 10 µm
 Max. operating pressure 100 bar
 Max. flow 250 lpm
 Input / Output DN32 Steck-O
 Backflush outlet DN25 Steck-O
 Material brass

Typical application Water filtration
 Emulsion/Cooling/Spray

Backflush filter



ID - 3122

Double filter automatic backflushable

Filter rating from 10 µm
 Max. operating pressure 100 bar
 Max. flow 800 lpm
 Input / Output G2
 Material brass

Typical application Water filtration
 Emulsion/Cooling/Spray

Backflush filter



ID - 3197

Double filter - backflushable

Filter rating 25 - 100 µm
 Max. operating pressure 350 bar
 Max. flow 500 lpm
 Input / Output G2
 Material stainless steel

Typical application High pressure filtration

Backflush filter



ID - 10820

Double filter - automatic backflushable

Filter rating from 25 µm
 Max. operating pressure 350 bar
 Max. flow 500 lpm
 Input / Output DN25SS
 Backflush outlet DN19

Material stainless steel
 Typical application Roof support filtration

Backflush filter



ID - 11022

Double filter - backflushable

Filter rating from 10 µm
 Max. operating pressure 415 bar
 Max. flow 250 lpm
 Input / Output SAE 1½"
 Backflush outlet DN19
 Material stainless steel

Typical application High pressure filtration

Backflush filter



ID - 11101

Double filter - backflushable

Filter rating from 25 µm
 Max. operating pressure 420 bar
 Max. flow 400 lpm
 Input / Output DN25SS
 Backflush outlet DN19
 Material stainless steel

Typical application Roof support filtration

Filter element



ID - 1298

Type filter cartridge
 Execution unpleated
 Filter medium wire mesh
 Filter rating from 3 µm
 Material stainless steel

Typical application In-line filter

Filter element

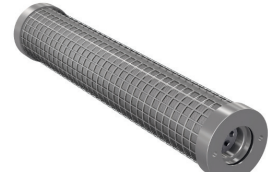


ID - 1448

Type filter cartridge
 Execution unpleated
 Filter medium wire mesh
 Filter rating from 3 µm
 Material stainless steel

Typical application Valve filtration

Filter element



ID - 3197

Type Filter element
 Execution unpleated
 Filter medium laminate
 Filter rating from 25 µm
 Material stainless steel

Typical application Water filtration/
 High pressure filtration

In-line filter



ID - 1174
In-line filter high pressure

Filter rating	from 3 µm
Max. operating pressure	max. 420 bar
Max. flow	600 lpm
Input / Output	several options
Material	stainless steel
Typical application	High pressure filtration

In-line filter



ID - 1329
In-line filter

Filter rating	10 - 100 µm
Max. operating pressure	420 bar
Max. dP element	315 bar
Max. flow	45 lpm
Input / Output	DN10 Steck-O
Material	stainless steel
Typical application	Last chance filtration

In-line filter



ID - 3077
In-line filter longlife

Filter rating	25 µm, 40 µm
Max. operating pressure	350 bar
Max. dP element	320 bar
Max. flow	200 lpm
Input / Output	DN20 Steck-O
Material	stainless steel
Typical application	Last chance filtration

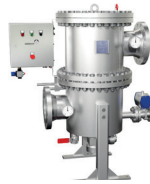
Backflush filter



ID - 3218
Automatic backflush filter

Filter rating	from 25 µm
Max. operating pressure	40 bar
Max. flow	1500 lpm
Input / Output	DN100
Backflush outlet	DN40
Material	stainless steel
No. of elements	6
Typical application	Water filtration Emulsion/Cooling/Spray

Backflush filter



ID - 3219 / 18
8" Automatic backflush filter

Filter rating	from 25 µm
Max. operating pressure	40 bar
Max. flow	6200 lpm
Input / Output	8" ASME 300
Backflush outlet	DN40 Steck-O
Material	stainless steel
No. of elements	18
Typical application	Water filtration Emulsion/Cooling/Spray

Backflush filter



ID - 10152
Double filter - backflushable

Filter rating	25, 50 and 100 µm
Max. operating pressure	100 bar
Max. flow	800 lpm
Input / Output	G2
Backflush outlet	DN38 Steck-O
Material	stainless steel and brass
Typical application	Water filtration Emulsion/Cooling/Spray

Return filtration



ID - 3086
Double filter returnline

Filter rating	3 µm - 25 µm
Max. operating pressure	10 bar
Max. flow	1600 lpm
Input / Output	G2/G3/DN80/DN100
Material	stainless steel
Typical application	Return filtration

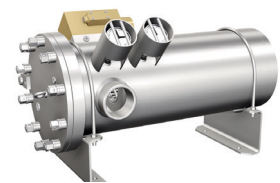
Return filtration



ID - 10020
Intank filter triple L

Filter rating	from 3 µm
Max. operating pressure	21 bar
Max. flow	2600 lpm
Input / Output	3"NPT
Bypass dP	5 bar
Material	stainless steel
Typical application	Intank filter

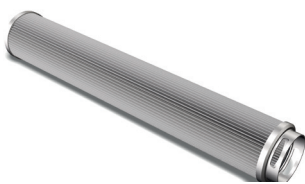
Return filtration



ID - 10250
Tank filter triple L short

Filter rating	from 3 µm
Max. operating pressure	41,5 bar
Max. dP element	5 bar
Max. flow	2600 lpm
Input / Output	3" NPT
Material	stainless steel
Typical application	Intank filter

Filter element



ID - 3230

Type	Filter element
Execution	pleated
Filter medium	wire mesh / fleece
Filter rating	from 3 µm
Material	stainless steel / alu
Typical application	Return filtration

Filter element



ID - 10004

Type	filter cartridge
Execution	unpleated
Filter medium	wire mesh
Filter rating	from 3 µm
Material	stainless steel
Typical application	Valve filtration

Filter element



ID - 10103

Type	Filter element
Execution	glued
Filter medium	slotted tube
Filter rating	50 µm - 500 µm
Material	stainless steel
Typical application	Water filtration

In-line filter



ID - 3083

In-line filter longlife

Filter rating	25 µm, 40 µm
Max. operating pressure	350 bar
Max. dP element	315 bar
Max. flow	300 lpm
Input / Output	DN 25 Steck-O
Material	stainless steel
Typical application	Last chance filtration

In-line filter



ID - 10266

In-line filter

Filter rating	25 µm, 80 µm
Max. operating pressure	350 bar
Max. flow	200 lpm
Input / Output	DN20 Steck-O
Material	stainless steel
Typical application	Last chance filtration

In-line filter



ID - 10771

In-line filter

Filter rating	from 25 µm
Max. operating pressure	350 bar
Max. flow	400 lpm
Input / Output	DN25 Steck-O
Material	stainless steel
Typical application	Last chance filtration

Backflush filter



ID - 10252

Double filter - backflushable

Filter rating	25, 50 und 100 µm
Max. operating pressure	150 bar
Max. flow	300 lpm
Input / Output	G1¼
Backflush outlet	DN19 Steck-O
Material	stainless steel und brass
Typical application	Water filtration Emulsion/Cooling/Spray

Backflush filter

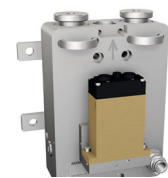


ID - 10703

Double cartridge filter - automatic backflushable

Filter rating	25 - 100 µm
Max. operating pressure	350 bar
Max. flow	1000 lpm
Input / Output	G2
Backflush outlet	DN19 Steck-O
Material	stainless steel and brass
Typical application	High pressure filtration

Backflush filter



ID - 10788

Double filter - automatic backflushable

Filter rating	25 µm
Max. operating pressure	350 bar
Max. flow	500 lpm
Input / Output	DN25 Steck-O
Backflush outlet	DN19 Steck-O
Material	stainless steel
Typical application	Roof support filtration

Return filtration



ID - 10679

Double filter returnline

Filter rating	from 3 µm
Max. operating pressure	10 bar
Max. flow	1600 lpm
Input / Output	DN80
Material	stainless steel
Typical application	Return filtration

Return filtration



ID - 10939

Double returnline station

Filter rating	from 3 µm
Max. operating pressure	6 bar
Max. flow	5400 lpm
Input / Output	DN150
Material	stainless steel
Typical application	Return filtration

Return filtration



ID - 10986

Single bagfilter

Filter rating	from 3 µm
Max. operating pressure	16 bar
Max. flow	800 lpm
Input / Output	DN50
Material	stainless steel
Typical application	Return filtration

Filter element



ID - 10252

Type	Filter element
Execution	unpleated
Filter medium	laminate
Filter rating	from 3 µm
Material	stainless steel
Typical application	Water filtration

Filter element



ID - 10266

Type	Filter element
Execution	pleated
Filter medium	wire mesh
Filter rating	from 3 µm
Material	stainless steel
Typical application	In-line filter

Filter element



ID - 10322

Type	Filter element
Execution	pleated
Filter medium	wire mesh
Filter rating	from 3 µm
Material	stainless steel
Typical application	In-line filter

For more information please contact us at

info@seebach.com

info@johncrane.com



The Seebach name is renowned for filtration solutions that utilize leading edge application knowledge and precision manufacturing expertise. John Crane acquired Seebach GmbH in 2018 to complement its existing filtration business, further enhancing its technology leadership and providing new capabilities to reduce innovation cycles and grow into mission-critical process industries.

seebach.com



Global Service Network

- » Over 200 facilities in more than 50 countries
- » Close proximity to customers' operations
- » Local service and expert global support
- » Seebach is a leader in filtration since 1970.

North America
United States of America
Tel: 1-847-967-2400

Europe
Germany
Tel: 49-561-98297-0

Latin America
Brazil
Tel: 55-11-3371-2500

Middle East & Africa
United Arab Emirates
Tel: 971-481-27800

Asia Pacific
Singapore
Tel: 65-6518-1800

smths
bringing technology to life

If the products featured will be used in a potentially dangerous and/or hazardous process, your John Crane representative should be consulted prior to their selection and use. In the interest of continuous development, John Crane companies reserve the right to alter designs and specifications without prior notice. It is dangerous to smoke while handling products made of PTFE. Old and new PTFE products must not be incinerated. ISO 9001 and ISO 14001 Certified, details available on request.